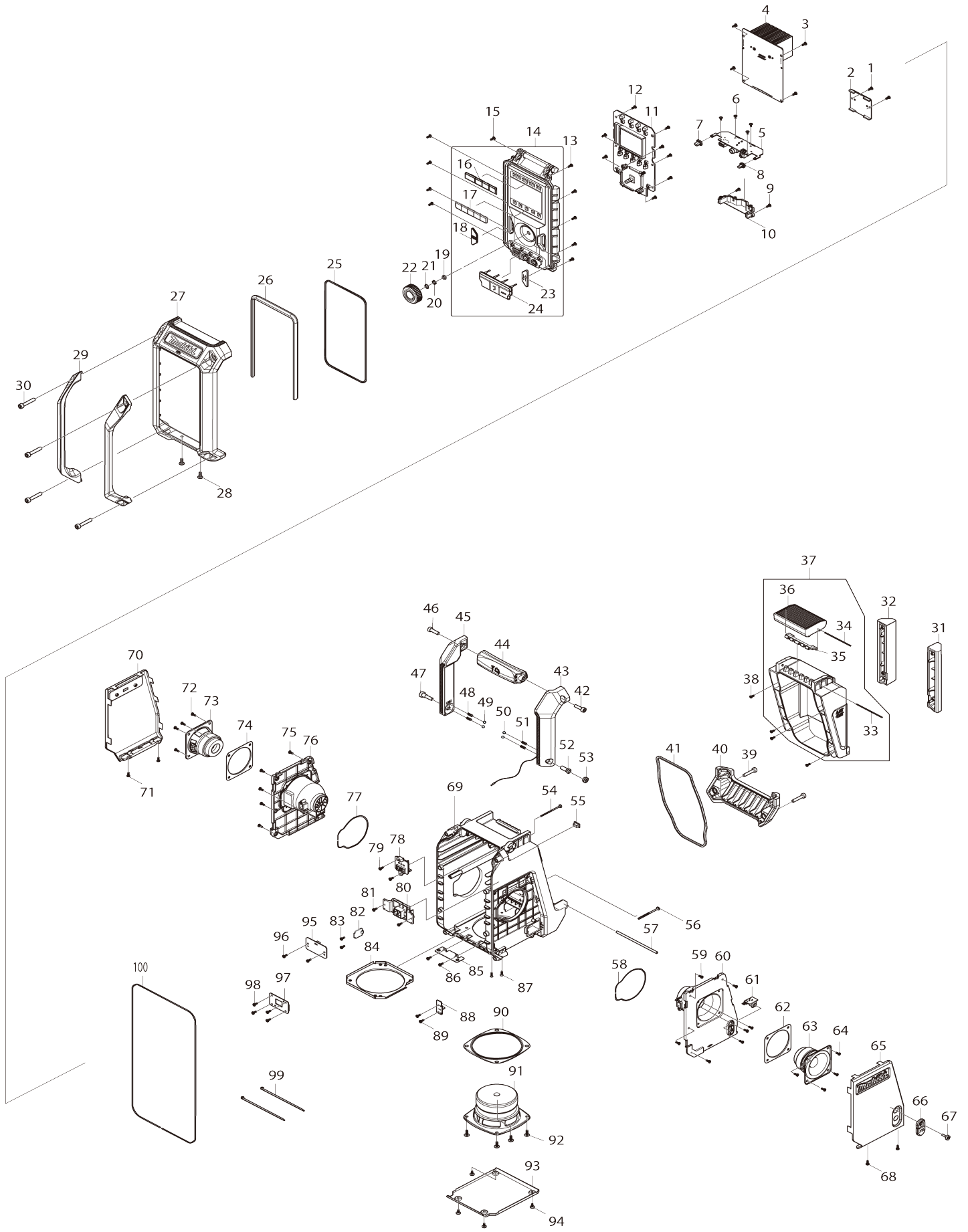


# Model No.DMR115 Job Site Radio



Model No.DMR115 Job Site Radio

Item No.	Parts No.	Description	Interchangability	Q'ty	New/Old	Note1	Note2
001	SE00000521	SCREW PTB 3X8(ZK) 29S16308001		2			
002	SE00000683	PCB H ASS'Y		1			
003	SE00000521	SCREW PTB 3X8(ZK) 29S16308001		4			
004	SE00000774	PCB A ASS'Y		1	*		
004-1	SE00000831	PCB A ASS'Y	O	1	*		
004-2	SE00001320	PCB A ASS'Y	<	1			
005	SE00000775	PCB P ASS'Y		1			
006	SE00000685	SCREW PTB 2.6X5 ZK		4			
007	SE00000750	LED RUBBER L		1			
008	SE00000751	LED RUBBER R		1			
009	SE00000521	SCREW PTB 3X8(ZK) 29S16308001		2			
010	SE00000752	JACK PCB HOLDER		1			
011	SE00000776	PCB C ASS'Y		1			
012	SE00000521	SCREW PTB 3X8(ZK) 29S16308001		8			
013	SE00000521	SCREW PTB 3X8(ZK) 29S16308001		5			
014	SE00000778	FRONT CABINET ASS'Y(AUS)		1			
014		INC. 16-18,23,24					
015	SE00000521	SCREW PTB 3X8(ZK) 29S16308001		5			
016	SE00000779	POWER KEY		1			
017	SE00000695	PRESET KEY		1			
018	SE00000780	AUTO TUNE		1			
019	SE00000754	EN/SW WASHER		1			
020	SE00000755	EN/SW NUT		1			
021	SE21B1110A	ROTARY KNOB RING		1			
022	SE00000698	ROTARY KNOB		1	*		
022-1	SE00001045	ROTARY KNOB	X	1			
023	SE00000697	EQ KEY		1			
024	SE00000699	JACK RUBBER COVER		1	*		
024-1	SE00001243	JACK RUBBER COVER	<	1			
025	SE00000700	FRONT CABINET PACKING		1			
026	SE00000756	FRONT LENS		1			
027	SE00000701	FRONT BUMPER		1			
028	SE09064161	SCREW M4X16		2			
029	SE00000703	FRONT BAR		2			
030	SE00000709	SCREW PTHE 6X33(CR)		4			
031	SE00000704	BATTERY BUMPER R		1			
032	SE00000705	BATTERY BUMPER L		1			
033	SE00000539	PIN D2X77 2100B300200		1			
034	SE00000533	PIN D2X88 2100B300100		1			
035	SE00000536	LOCKER HINGE 3300B30000010		1			
036	SE00000706	LOCKER COVER		1			
037	SE00000757	BATTERY COVER		1			
037		INC. 33-36					

038	SE00000521	SCREW PTB 3X8(ZK) 29S1630800 1	4		
039	SE00000709	SCREW PTHE 6X33(CR)	2		
040	SE00000710	REAR BUMPER	1		
041	SE00000711	BATTERY COVER PACKING	1		
042	SE00000176	SCREW PTHE6X20(CR)	1		
043	SE00000781	RIGHT HANDLE ASS'Y	1		
044	SE00000713	HANDLE BAR	1		
045	SE00000714	LEFT HANDLE ASS'Y	1		
046	SE00000176	SCREW PTHE6X20(CR)	1		
047	SE00000715	SCREW PTHE 6X17(CR)	1		
048	SE00000759	SPRING	2		
049	SE09994007	STEEL BALL	2		
050	SE09994007	STEEL BALL	2		
051	SE00000759	SPRING	2		
052	SE00000716	SCREW PTHE 7X16(CR)	1		
053	SE00000717	SCREW PTHE 10.8X4.5(CR)	1		
054	SE00000445	SCREW PTB 3X45(NI)	1		
055	SE00000721	UPDATE RUBBER	1		
056	SE00000445	SCREW PTB 3X45(NI)	1		
057	SE021PC030	BATTERY COVER LOCKER	1		
058	SE00000730	SPEAKER HOLDER PACKING	1		
059	SE00000521	SCREW PTB 3X8(ZK) 29S1630800 1	7		
060	SE00000782	SPEAKER HOLDER R	1		
061	SE00000724	PCB F ASS'Y	1		
062	SE00000729	SPEAKER 2.5" PACKING	1		
063	SE00000728	SPEAKER ASS'Y 2.5"	1		
064	SE00000521	SCREW PTB 3X8(ZK) 29S1630800 1	4		
065	SE00000725	RIGHT SPEAKER NET ASS'Y	1		
066	SE00000726	DC JACK COVER	1		
067	SE00000404	SCREW PTHE 3X14(CR)	1		
068	SE00000521	SCREW PTB 3X8(ZK) 29S1630800 1	2		
069	SE00000784	REAR CABINET ASS'Y(BLUE:AUS)	1		
070	SE00000727	LEFT SPEAKER NET ASS'Y	1		
071	SE00000521	SCREW PTB 3X8(ZK) 29S1630800 1	2		
072	SE00000521	SCREW PTB 3X8(ZK) 29S1630800 1	4		
073	SE00000728	SPEAKER ASS'Y 2.5"	1		
074	SE00000729	SPEAKER 2.5" PACKING	1		
075	SE00000521	SCREW PTB 3X8(ZK) 29S1630800 1	5		
076	SE00000731	SPEAKER HOLDER L	1		
077	SE00000730	SPEAKER HOLDER PACKING	1		
078	SE00000732	TERMINAL 10.8V-A-3PIN	1		
079	SE00000521	SCREW PTB 3X8(ZK) 29S1630800 1	2		
080	SE00000733	TERMINAL E ASS'Y	1		
081	SE00000521	SCREW PTB 3X8(ZK) 29S1630800 1	2		
082	SE00000785	PCB G ASS'Y	1		

083	SE00000193	SCREW 3X10		2		
084	SE00000734	SPEAKER PLATE		1		
085	SE00000735	REAR PLATE		1		
086	SE00000521	SCREW PTB 3X8(ZK) 29S1630800 1		2		
087	SE00000736	SCREW JMF 3X10 ZK		2		
088	SE00000737	PCB B ASS'Y		1		
089	SE00000521	SCREW PTB 3X8(ZK) 29S1630800 1		2		
090	SE00000738	SPEAKER 4" PACKING		1		
091	SE00000739	SPEAKER ASS'Y 4"		1		
092	SE09064161	SCREW M4X16		4		
093	SE00000761	SPEAKER GRILL B		1		
094	SE00000521	SCREW PTB 3X8(ZK) 29S1630800 1		4	*	
094-1	SE00000741	SCREW PTT 3X8(ZK)	X	4		
095	SE00000786	PCB D ASS'Y		1		
096	SE00000521	SCREW PTB 3X8(ZK) 29S1630800 1		2		
097	SE00000743	PCB J ASS'Y		1	*	
097-1	SE00001098	PCB J ASS'Y	X	1		
098	SE00000521	SCREW PTB 3X8(ZK) 29S1630800 1		4		
099	SE00000195	W/TIES 100MM		2		
100	SE00000744	REAR CABINET PACKING		1		
A01	SE00000680	AC ADAPTER (AUS)		1		

Please state Parts No. when your order.

Print Date 18/03/2026